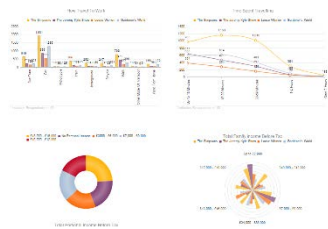
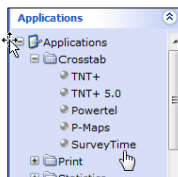


# How Do I Create a run for Autografix?



Autografix is an easy and quick way of converting your crosstab analysis into a deck of charts /graphs



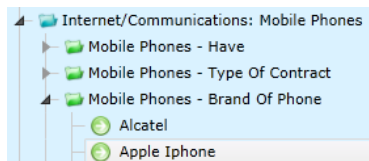
form. This How do I guide features step by step information on how to use Autografix and some useful tips for making the most of the software. The program can be accessed via SurveyTime:

**Step 1:** Launch SurveyTime- this can be done via one stop or the applications section in the side bar.

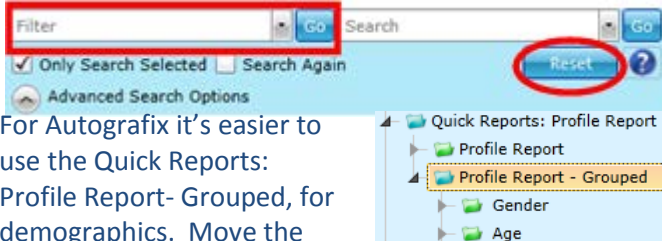
**Step 2:** Pick your survey and press continue(In this guide we're using TGI 2015 Q2 TJD14)

**Step 3:** Choose the brand(s) you want as your target and place them in as column.

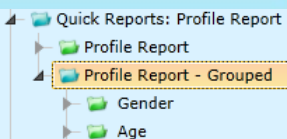
We will use Apple iPhones as the chosen brand/product. To find this quickly filter 'Internet'.



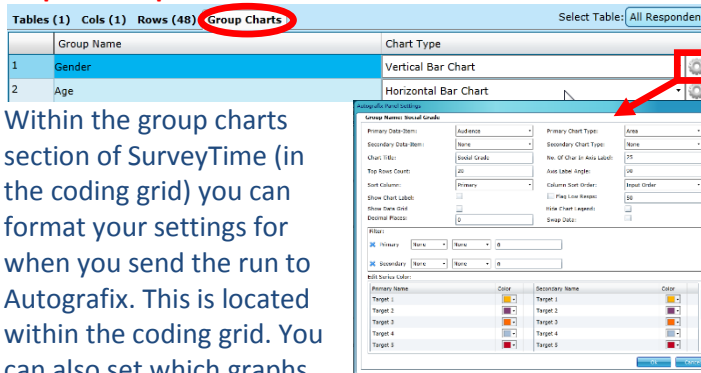
**Step 4:** Using the filter box search for "Quick" this should produce a list of all the quick reports within TGI.



For Autografix it's easier to use the Quick Reports: Profile Report- Grouped, for demographics. Move the whole quick report into your rows.



## Step 5: Group Charts



Within the group charts section of SurveyTime (in the coding grid) you can format your settings for when you send the run to Autografix. This is located within the coding grid. You can also set which graphs you want per Group Name. Within this screen select the chart types you'd like.

Group Name
Gender
Age
Social Grade
Home Own/Rent

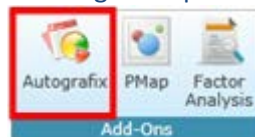
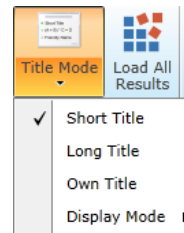
This section can save you a lot of time, setting chart types; it also provides an overview of what charts will be in your Autografix report.

## Step 6: Formatting charts

Once you have selected the charts you'd like you can then format them through the cog in group charts. Here you can decide on secondary data items, sort order, top results, chart titles and more.

**Important:** Before sending to Autografix make sure you set your titles as you want them to appear in the charts.

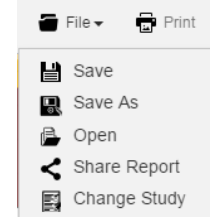
**Step 7:** In the toolbar within the Add-Ons section you'll find the Autografix option.



## Step 8: Export/Save/Share



When you think your report is finished you have a choice of how you want to share or store it. You can export the report to PowerPoint or PDF; this is in the toolbar above the report. Also within the toolbar you can share your report; this can be done after you save the report. 'Share Report' will provide a link to make sharing your report easy.



# How Do I Useful tips for Autografix



Settings > Page Layout- Changes background color and can put company logo in

Settings > Application Settings- Can alter to show top \_\_\_ rows, Sort order, Show Labels, Hide chart legend, no. of char in axis label



Within the coding grid if you right click on the information you want to be a table and select "Assign Group Name" you will be able to customize your charts range/data

Title	Code	Resps	Populati	GroupName
Age 15-24	A15			Age
Age 25-34	A25			Age
Age 35-44	A35			Age
Age 45-54	A45			Age
Age 55-64	A55			Age
Age 65+	A65			Age
Age 15-24	A15			Demographics
Age 25-34	A25			Demographics
Age 35-44	A35			Demographics
Age 45-54	A45			Demographics
Age 55-64	A55			Demographics
Age 65+	A65			Demographics

Grouped (rows 1-6)  
Non-Grouped (rows 7-12)

The image above shows grouped and non-grouped demographics; is you don't assign a group name to the non-grouped demographic it will place all your desired information into one chart.

When hovering over chart a tool bar will appear in at the top; in this you can:

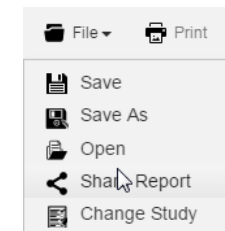


1. Swap column/row
2. Print chart
3. Export to PDF
4. Export to PowerPoint
5. Show/hide data
6. Change settings for individual charts; this includes changing the data item (audience, index, etc.).
  - a. Change the chart type
  - b. Change the data item
  - c. Insert a secondary background chart
  - d. Change the charts title
  - e. Change the sort order- this is useful if you are filtering top X rows (between d and e)
  - f. Change the series colours

This will apply to the individual chart; unlike application settings which will apply to all.



You can now share the Autografix report by saving it then pressing the Share Report option under File. This will provide you with a link to make sharing your findings easy.



With Autografix it's possible to organize your findings with the ability to move charts and notes as you please.

This formatting through dragging the charts and adding notes will be carried over to your exports.

You can run 19 variations of charts;

- Horizontal Bar Chart
- Stacked Horizontal Bar Chart
- Vertical Bar Chart
- Stacked Vertical Bar Chart
- Pie
- Area
- Radar Chart
- Radar Column Chart
- Filled Radar
- Tree Map
- Funnel
- Donut Chart
- Word Cloud
- Table
- Scatter
- Stacked Vertical Bar Chart (100%)
- Stacked Horizontal Bar Chart (100%)
- Water Fall
- Line